

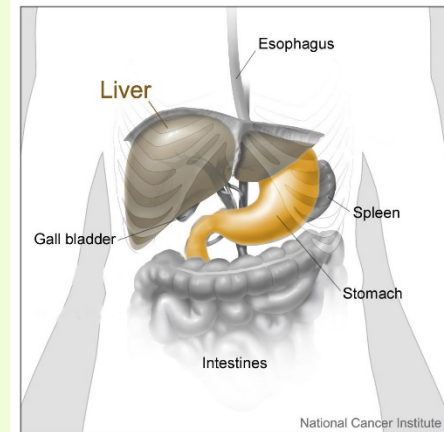
# So what is GIST cancer?

An explanation of Gastrointestinal Stomal Tumors



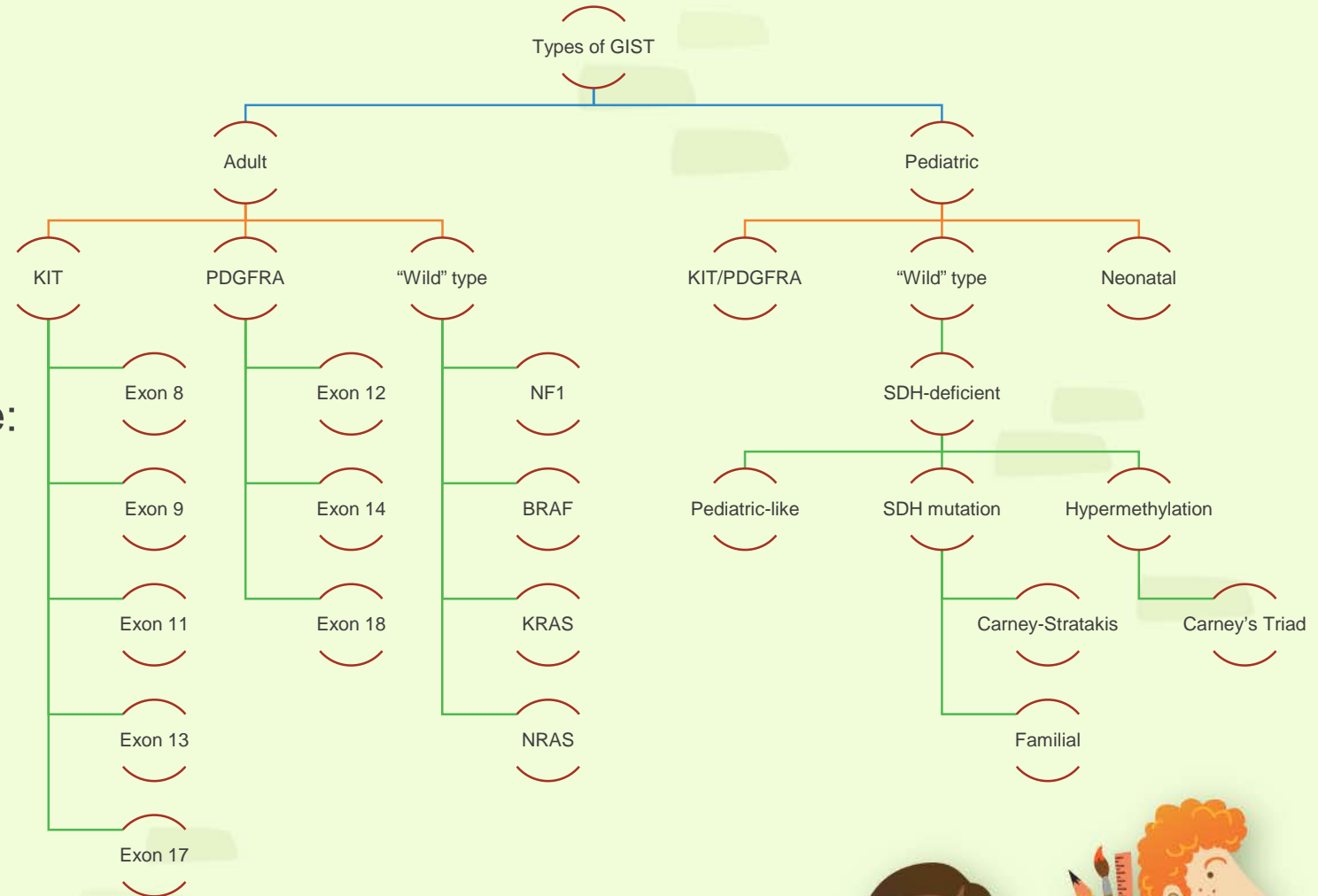
# GIST is one type of cancer

- A Gastrointestinal Stromal Tumor is a cancer that starts in the **Digestive System**.
- There are different types of GIST
  - Adult GIST
  - Pediatric GIST
  - Wild type GIST
  - Familial GIST
- It all depends on where the mutations happen in the cell's instructions.

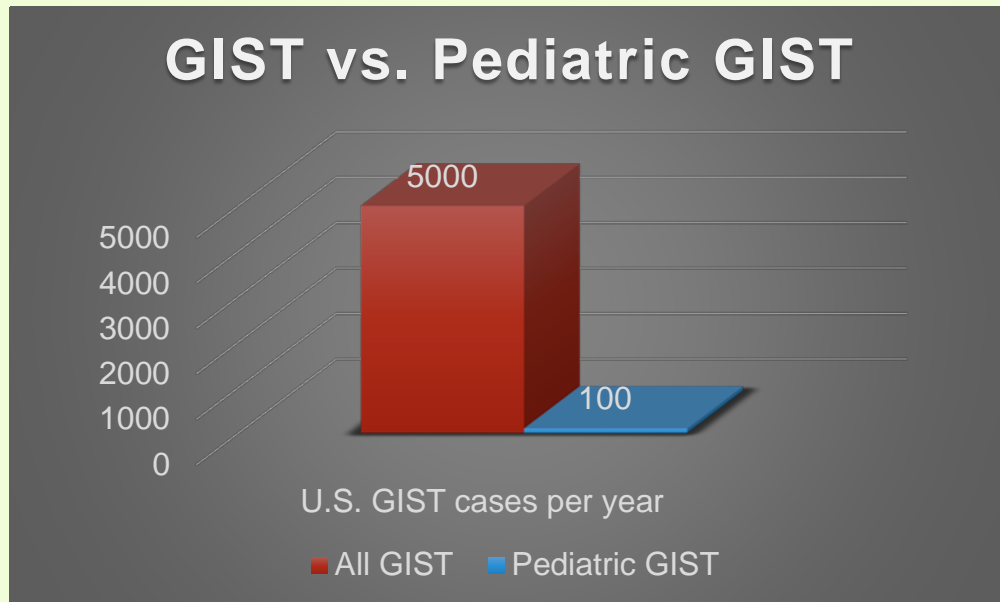


# But wait, there's more...

- Each type of GIST can be divided into smaller groups called **subgroups**.
- Some pediatric GIST subgroups are:
  - SDH-Deficient GIST
  - Carney-Stratakis Syndrome
  - Carney's Triad
  - Neonatal GIST
  - Pediatric-like / Wild type GIST



GIST is rare. Pediatric GIST is *very* rare.



Between 3,000 – 5,000 people are diagnosed with GIST in the U.S.A each year.

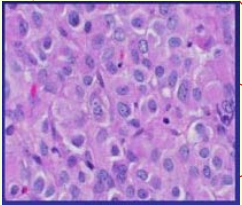
Only 1-2% of those are Pediatric GIST.



# Pediatric GIST is different from Adult GIST

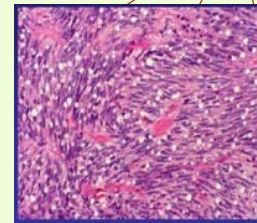
## Pediatric GIST

- 85% Girls
- 15% Boys
- Usually starts in the stomach, and often more than one tumor
- Higher chance to spread to lymph nodes
- But the tumors are slower to grow
- Cancer cells are epithelioid-shaped
- 85% of Pediatric GIST are in the Wild type group



## Adult GIST

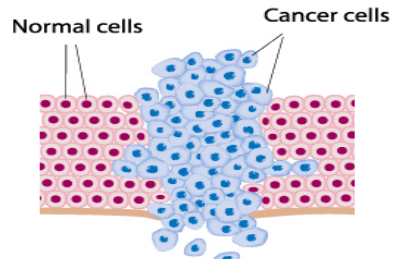
- 48% Girls
- 52% Boys
- Can start anywhere in the GI tract, and is usually only one tumor
- Rarely spreads to lymph nodes
- Tumors grow faster than Pediatric GIST
- Cancer cells are spindle-shaped
- 75% of Adult GIST are caused by KIT mutations



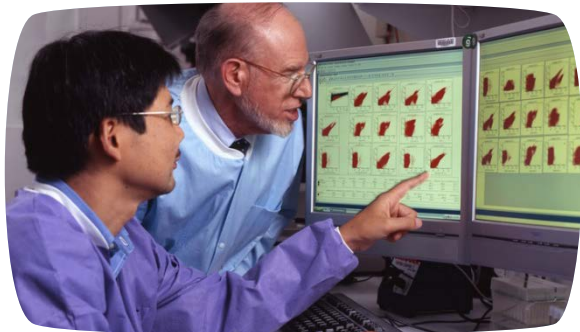
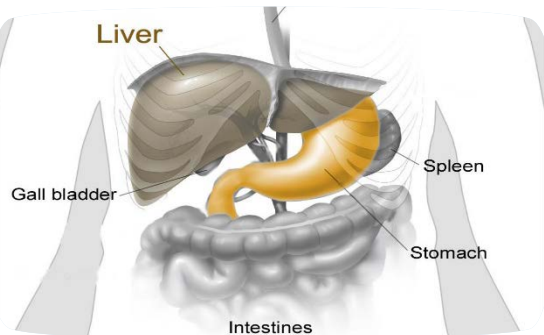
# GIST does not have a cure yet

- There is still a lot to learn about GIST, but doctors are finding better treatments to help people diagnosed with GIST.
  - Doctors found a drug called Gleevec to treat Adult GIST
  - Unfortunately, Gleevec does not work as well for Pediatric and Wild type GIST patients
- As technology advances, scientists are learning more about Pediatric and Wild type GIST everyday.
  - There are high hopes something soon will help us. Until then, “GIST keep swimming!”





© Alila Medical Images  
www.alilamedicalimages.com



## What was all that again?

- Cancer starts when a cell mutates, makes bad copies, and forms a tumor.
- When a mutated cell breaks away from the tumor, it spreads the cancer.
- Cancer is not like a cold, you can't catch cancer from someone else.
  
- GIST is a cancer of the digestive system.
- There are many types of GIST.
- GIST is rare in adults, but *very* rare in kids.
- The tumors of Pediatric GIST are different from Adult GIST
- There is no cure for GIST, but there are treatment options until one is found.

